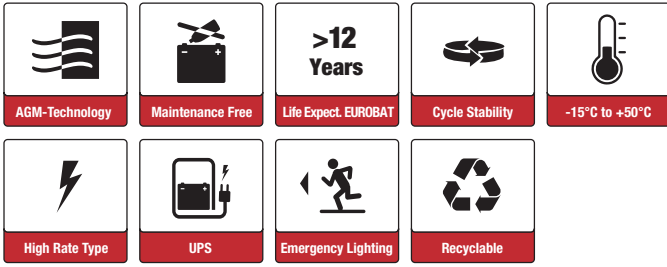




SBL100-12HR (12V2726W)



Applications

- Uninterruptable Power Supply (UPS)
- Electric Power System (EPS)
- Emergency backup power supply
- Emergency light
- Railway signal
- Alarm and security system
- Communication power supply
- DC power supply

Certificates



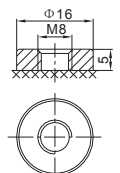
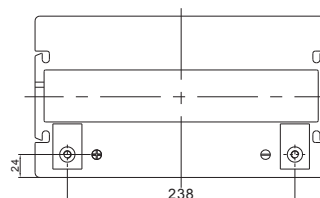
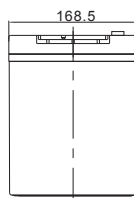
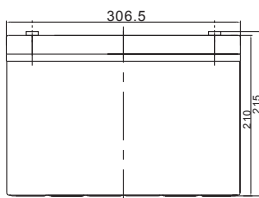
Specifications

Nominal Voltage	12V	Operating Temp. Range	Discharge: -20~50°C
Nominal Capacity	85.6Ah (C ₁₀ , 9.6V)	Charge: -10~50°C	
Approx. Weight	29.0kg	Storage: -20~50°C	
Terminal	M8	Cycle Use	Initial Charging Current less than 27A.
Container Material	ABS UL94 HB	Voltage 14.7V +0.1V at 20°C.	
Nominal Power	5 min 3371.4W	Temperature Coefficient -30mV/°C.	
(20°C / 9.6V/Block)	10 min 2725.8W	Standby Use	No limit on Initial Charging Current.
	15 min 2150.4W	Voltage 13.7V +0.1V at 20°C.	
Nominal Power	5 min 561.9W	Temperature Coefficient -20mV/°C.	
(20°C / 1.6V/Cell)	10 min 454.3W	Capacity affected by Temp.	40°C 103%
	15 min 358.4W	25°C 100%	
Max. Discharge Current	900A (5s)	0°C 86%	
Internal Resistance / Impedance (1kHz)	Approx. 5.5mΩ	Self Discharge	SSB batteries may be stored for up to 6 months at 20°C and then a freshening charge is required. For higher temperatures the time interval will be shorter.
Nominal Oper. Temp. R.	20±3°C	Life Expectancy	>12 years according to EUROBAT

Dimensions

■ M8 Terminal

Unit: mm | Dimensions: 306.5 Length X 168.5Width X 210 Height (215 Height incl. Terminal)





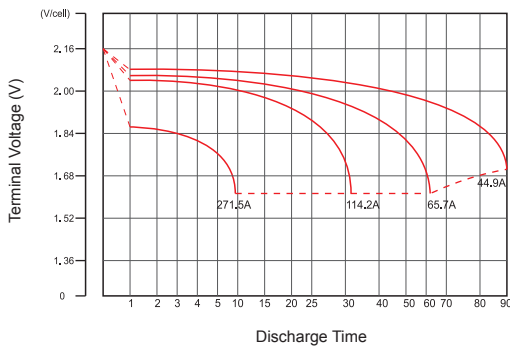
Constant Current Discharge (Amperes) at 20°C

F.V/Time	5min	8min	10min	15min	20min	30min	60min	90min	3h	5h	8h	10h
9.6V	305.8	267.2	241.5	188.0	153.1	112.9	65.3	46.9	22.64	15.52	10.37	8.56
10.0V	277.5	245.0	223.2	175.4	143.9	106.8	62.3	45.0	22.34	15.34	10.27	8.48
10.2V	265.7	235.5	215.2	170.0	139.9	104.2	61.1	44.1	21.94	15.10	10.13	8.37
10.5V	245.3	219.4	201.7	160.8	132.9	99.8	58.9	42.7	21.41	14.79	9.94	8.23
10.8V	224.8	203.2	188.3	152.2	126.6	95.6	56.8	41.3	20.71	14.37	9.70	8.04
11.1V	192.9	173.1	159.5	130.9	109.9	84.6	51.3	37.7	19.79	13.82	9.37	7.79

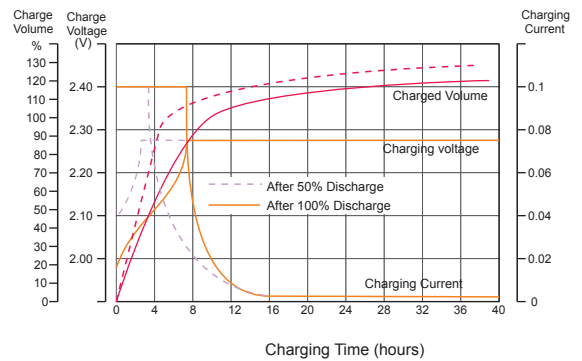
Constant Power Discharge (Watts/block) at 20°C

F.V/Time	5min	8min	10min	15min	20min	30min	60min	90min	3h	5h	8h	10h
9.6V	3371.4	2985.6	2725.8	2150.4	1765.8	1315.8	736.2	532.2	263.34	182.23	123.36	102.52
10.0V	3138.0	2801.4	2572.2	2040.0	1685.4	1261.8	708.6	514.8	261.43	181.05	122.50	101.76
10.2V	3034.8	2717.4	2500.8	1992.6	1648.8	1236.6	696.6	507.0	257.38	178.60	120.99	100.53
10.5V	2847.6	2568.0	2374.8	1906.8	1582.8	1195.8	677.4	493.8	252.22	175.45	119.00	98.91
10.8V	2650.8	2410.2	2242.8	1822.2	1522.8	1153.8	657.6	480.0	244.92	171.07	116.33	96.73
11.1V	2308.8	2082.0	1925.4	1584.0	1334.4	1029.0	598.2	441.6	235.16	165.08	112.69	93.84

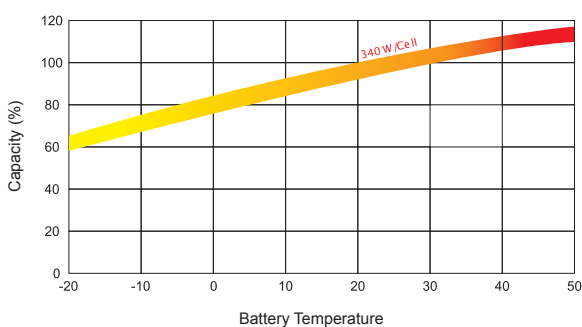
Discharge Characteristics



Float Charging Characteristics



Temperature Effects in Relation to Battery Capacity



Effect of Temperature on Long Term Float Life

